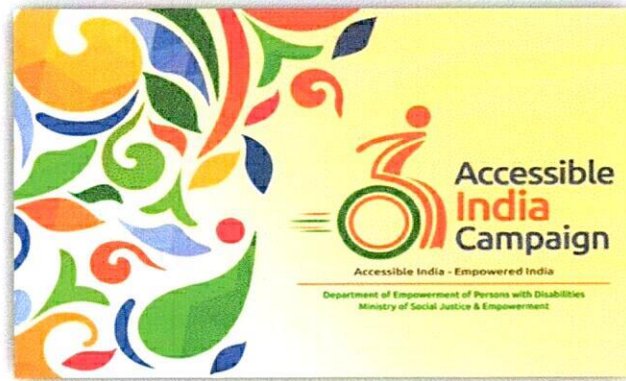


POST AUDIT REPORT

**Aditi Mahavidyalay
New Delhi**

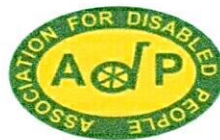
SO (Admin)
Manita
08.06.2023

Submitted under:



Sugamya Bharat Abhiyan
(Accessible India Campaign)

: Prepared By:



Association for Disabled People

[Signature]
Gen. Secretary

Association for Disabled People

Office: Basti Vikas Kendra, F-1, Sundar Nagri, Delhi-110093

Mob: +91-9350164514

E-mail: disabledpower@yahoo.in

Page 1 of 20

INDEX

S.No.	Content	Page No.
1.	Introduction :	3
2.	Legal Framework	4
3.	Introduction: Access Audit	5
4.	Objective and Standards	5
5.	Principles of Audit	6
6.	Audit Team	6
7.	Introduction of Building	7
External Environment : Observations/ Recommendation-		
8.	Parking	8-9
9.	Alighting ,	10
10.	Accessible Route	11-12
11.	Signage	13-14
Internal Environment : Observations/ Recommendation		
12.	Accessible Entrance and Ramp	15-17
13.	Reception & Lobby	18-19
14.	Staircase and Handrail	20-22
15.	Elevator/Lifts	23
16.	Escalators / Passenger Conveyors	23
17.	Control and Operating Mechanisms	23
18.	Emergency Evacuation	24
19.	Corridor	25-26
20.	Door and Doorways	27-28
21.	Drinking Water	29
22.	Flooring and Furniture	30-31
23.	Common Building Elements	31
24.	Toilet	32-34
25.	Information, Communication and Services	35
26.	General Summary and Recommendations	36-38
27.	Technical Specification and Recommendation	39-47
28.	Vendor List	48

ACCESS AUDIT REPORT:

This report provides a descriptive overview of the current facilities, identifies areas of concern, and includes visual representations of the existing infrastructure. The report is accompanied by an annexure that consists of detailed recommendations, technical specifications, and accompanying photographs and suggestions.

The audit is divided into three main sections: the external environment, internal environment, and information, communication, and services. Each section focuses on assessing the accessibility and inclusivity of the respective areas, highlighting potential barriers and suggesting improvements.

External Environment:

This section evaluates the accessibility of the surrounding environment, including pathways, entrances, parking areas, and outdoor spaces. It identifies any obstacles or challenges that may hinder the ease of access for individuals with disabilities. Recommendations are provided to enhance the external environment and ensure safe and convenient access for all.

Internal Environment:

The internal environment section assesses the accessibility of indoor spaces such as classrooms, laboratories, offices, restrooms, and common areas. It examines factors such as layout design, furniture arrangement, signage, lighting, and ventilation. The report highlights any barriers that may impede the mobility or participation of individuals with disabilities and offers recommendations for modifications or enhancements.

Information, Communication, and Services:

This section focuses on the accessibility of information, communication, and services within the audited facility. It includes an evaluation of digital platforms, websites, communication materials, and service provisions to determine their compatibility with accessibility standards. Recommendations are provided to ensure that information and services are accessible to individuals with various disabilities.

The annexure accompanying the report provides a comprehensive compilation of recommendations. It includes detailed technical specifications, photographs, and suggested solutions for addressing the identified barriers. These recommendations aim to improve the overall accessibility and inclusivity of the audited facility, fostering an environment that caters to the diverse needs of individuals with disabilities.

The Access Audit Report serves as a valuable resource for organizations seeking to enhance accessibility and create inclusive spaces. It provides actionable insights and practical guidance for implementing accessibility improvements, ultimately promoting equal access and opportunities for all individuals.

Please note that this is a general description of an access audit report, and the specific content and structure may vary depending on the organization or project requirements.

POST AUDIT REPORT:

The post-audit report provides a detailed overview of the facilities following the completion of the access audit. It outlines the actions taken to improve the infrastructure and enhance accessibility. The report includes visual documentation in the form of photographs, along with technical details, showcasing the implemented changes and modifications.

The report highlights the specific works that have been carried out as a result of the audit, such as modifications to physical structures, installations of assistive technologies, adjustments to signage, and improvements in overall accessibility. Each work is accompanied by relevant photographs, providing a visual representation of the changes made.

Furthermore, the report evaluates the effectiveness and adequacy of the implemented measures. It assesses whether the recommended suggestions and recommendations have been successfully implemented and whether the completed work meets the required standards for accessibility. If any further work or modifications are deemed necessary, they are identified and outlined in the report.

The purpose of the post-audit report is to document the progress made and ensure that the proposed improvements have been executed as intended. It serves as a reference point to verify the implementation of accessibility measures and to provide a comprehensive overview of the changes made.

By examining the post-audit report, stakeholders can gain insights into the efforts made to enhance accessibility, understand the specific improvements that have been carried out, and assess the overall impact on the accessibility of the audited facility.

Please note that the content and structure of the post-audit report may vary depending on the organization or project requirements. The description provided here serves as a general outline of the report's purpose and key components.

AUDIT TEAM:

S.No.	Name	As
1.	Mrs. Suvarna Raj	Access Auditor & Wheelchair User
2.	Ms. Gayatri Betra	Special Educator
3.	Mr. Omprakash	Photographer /Escort
4.	Ms. Hemlata	Report Maker

Introduction

Aditi Mahavidyalay, Delhi



Building Type	College
Principal Name	Prof. (Dr.) Mamta Sharma
Contact Details	infor@aditi.du.ac.in
College Area	3.68 Accor
PwD Staff	3
PwD Student	5
Audit Report Date	22 June 2022
Post Visit	12 May 2023

EXTERNAL ENVIRONMENT

The external environment includes the following:

Parking Lot

There is designated parking for staffs & visitors for two wheelers as well as four wheelers also after access audit there is reserved car or two wheeler parking for persons with disabilities as per the accessibility guidelines.



Picture before audit



Picture Post audit



Accessible parking bay proposed near the Entrance

Alighting

Right now, there is no designated space for alighting of people with disabilities. But after the parking bay for people with disabilities has been identified and transformed, there is space to design one alighting point with required signposts, step free access and tactile guidance.

Recommendations: Alighting

- Alighting point has to be constructed next to the parking bay.
- Alighting point should be leveled and cleared out of traffic lane.
- Proper sign-posts and signage to be installed along with tactile guiding path including directional, hazard warning and positional tiles directing to the entrance.
- There should be a step free route leading from the alighting point to the main entrance of the buildings

Accessible Route

The office is accessed by one main gate meant for vehicular and pedestrian entry and exit. There is a security post at the main entrance gate. There is a pedestrian walkway in the office that is separated from the vehicular roads. Now the road is accessible for visually impaired people with a tactile path. But still, we found some broken holes that can be repaired, as well as signage and some places where tactile paths are missing.



Route with tactile

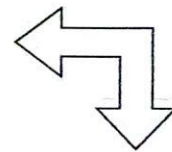
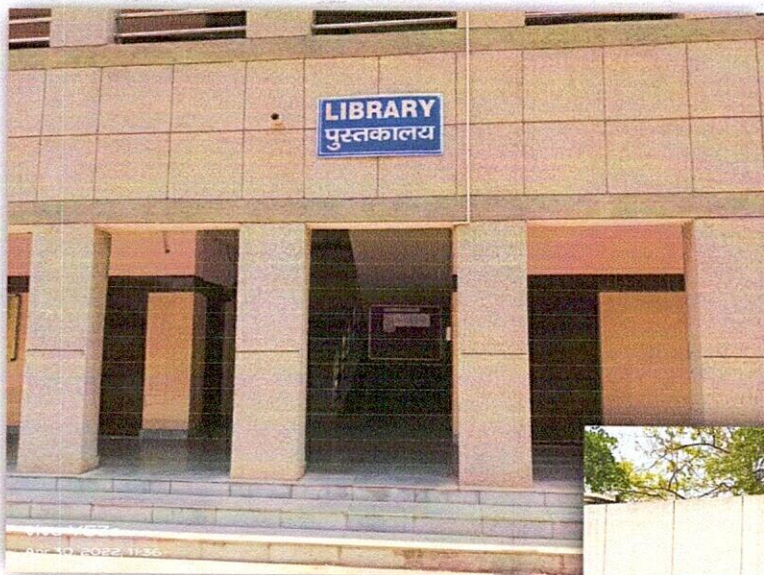
Picture After audit



Signage

Now the Office has.

- International Standards for Symbols of Accessibility to be Installed
- The signage size and placement comply with the handbook specifications.
- **Audio signage, along with Braille and tactical signage, is missing.**
- All the signage is in high colour contrast.
- All the signage is well illuminated.
- **Visual and auditory public address system is missing**
- **Provide external signage's near entrance gate.**
- **Implementation as part of specific regular maintenance/renewal**



Signage's



Internal Environment

The internal environment includes the following:

Observations: - Accessible entrance and Ramp

- There is no accessible identification signage to identify the entrance. Audio signals are also missing.
- Now there is an entry ramps in all premises like office, stage etc with both side railing as per the accessibility guidelines the gradient of ramp is 1:8 (standard 1:12 / 15 gradients.)
- Also there is no railing and no tactile marking to accessible for persons with disabilities in some ramps.
- Entrance area is illuminated.



Picture before audit



Ramps with railing and without railing



Reception and Lobby

There is particular accessible reception counter at the entrance. There is no signage that leads to the reception and hence-forth to various building facilities. Also missing signage of department / unit name. The office also does not have Audio-Induction Loop and Accessible Printed Information for people with disabilities. There is no live assistance available at the counter to guide people to their destination. None of the staff are trained to communicate in Indian Sign Language.

Counter height 1100mm with no toe and knee space

Note. Make reception counter as per audit report

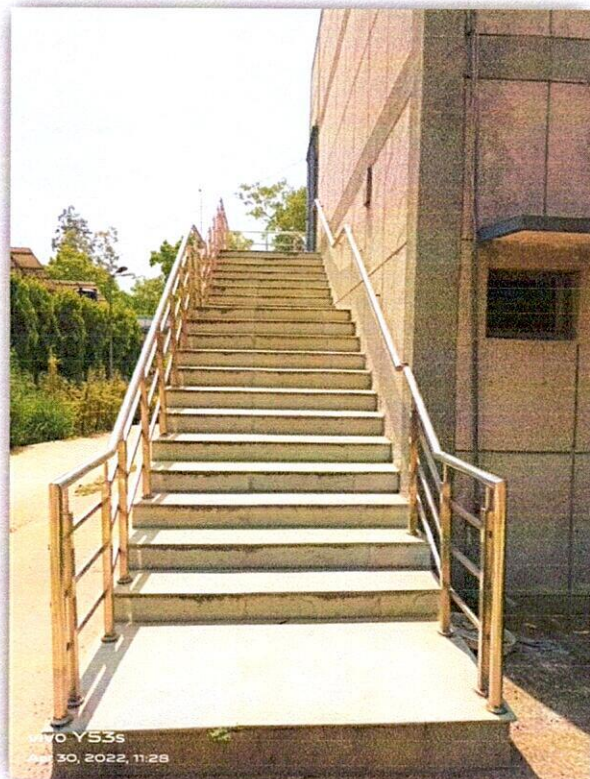


Inaccessible reception counter

Staircase and Handrails

- There is different types of staircase and Color-contrasting strips not installed at the edge of the steps
- The steps in all stairs have uniform risers and treads of 150 mm and 300 mm respectively.
- The staircases are well illuminated but there are missing tactile floor guidance, color contrast strips at edges of steps and warning tiles at the beginning and end of each flight.
- Stairs are non slippery and non-glary and run straight and uniformly without any abrupt breaks or gaps in between them.
- Handrails not installed on the side of the walls have the desired minimum hand clearance of 50 mm between handrails and walls.
- The staircases flights have steel handrails on one side at a single height of, non-slippery, have uninterrupted grip and have no sharp edges.

Note: Make staircase as per audit report.



Inaccessible Staircase

Elevators / Lifts

There is no need for elevator or Lift as building has only G + 1

Escalators / Passenger Conveyors:

There are no Escalators/Passenger Conveyors present in this building. In any case, escalators / passenger conveyors are not considered as accessible for disabled people and, hence, not recommended.

Control and Operating Mechanisms:

There are no vending machines or user operable units present in the building.

The electric sockets and switches are not all present at recommended heights from the ground level, and some are placed as high as around 1200 mm. There is no color contrast in between the electrical sockets, switches and the walls in almost all cases. The manual switches are easy to operate. Touch panels, considered inaccessible, are not used in the building. The switches or the electrical panels do not have embossed letters/symbols or Braille information next to them.

Note: Control and Operating Mechanisms make as per audit report

Emergency Evacuation:

Emergency evacuation instrument was installed in building.

There is no emergency evacuation provision in the building. The building does not have any visual or audible alert system, nor is there any designated refuge area for persons with disability. Also, any kinds of emergency evacuation signage are.



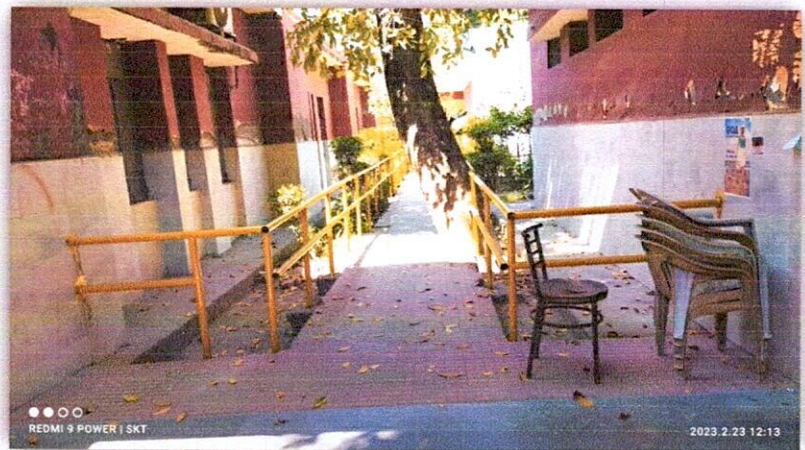
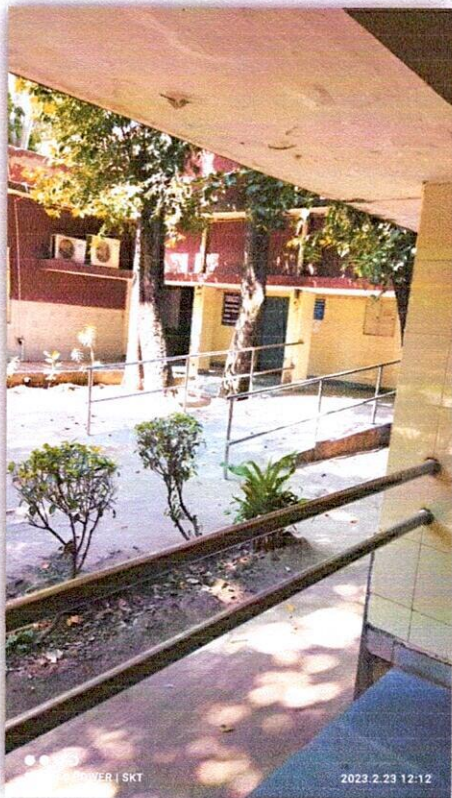
Note: Emergency Evacuation system plan per audit report.

Corridors:

- The building has wide corridors and clear space for maneuverability and turning of wheel chair users.
- There is color contrast from the floors to the walls, doors and ceiling and the corridor floors are with heavy patterns.
- There was a handrail found in the whole building, particularly the corridors. We found tactile in some corridors which are useful for persons with vision impairment.



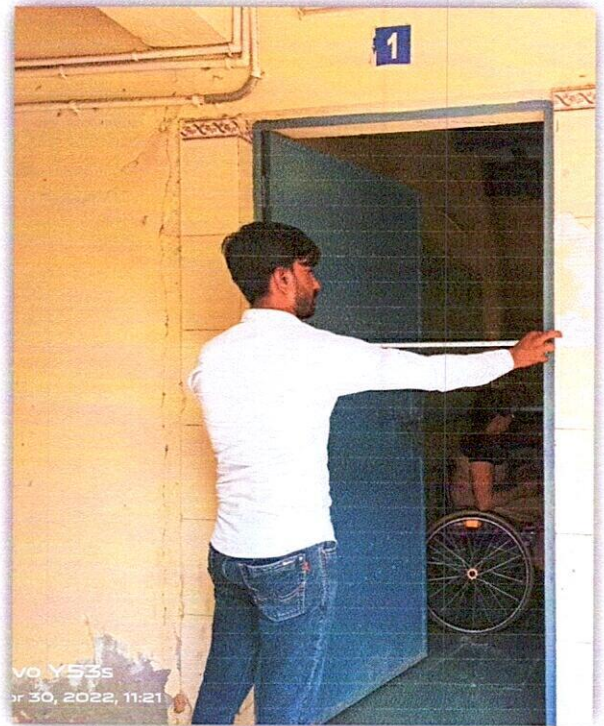
Picture before audit



Corridors with handrails

Doors & Doorways:

Some doors in the building not maintain a minimum of 1000mm opening. They are easy to operate and do not require a lot of effort. The building has single-hinged doors, which are push type doors which swing one way. Door handle height is 950mm. Doors open inward from the corridor including most of the toilet doors. All doors, doorframes, door furniture contrast in colour with the background wall. The doors do not have timed-release spring for shutting. All the doors are manual. There is sliding doors in toilet. Most doors have not enough space like toilet for a wheel chair user to operate it without any difficulty.



Note: make doors as per audit report



Doorways

Drinking Water Facilities:

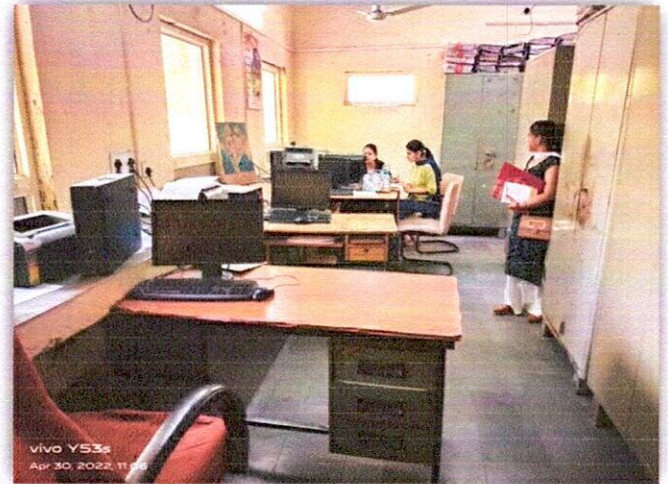
We found inaccessible drinking water facility with two steps

Note: make changes as per audit report

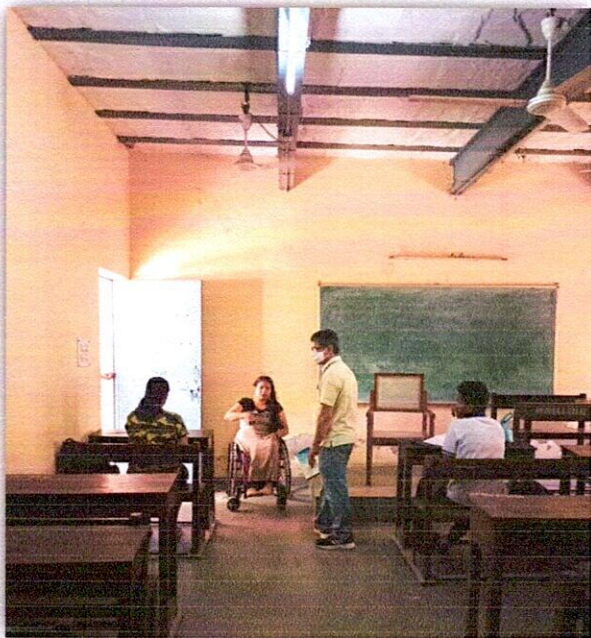


Flooring and Furniture

The furniture of different places was not according to the accessibility guidelines. (Table height 760 mm) some table with no toe and knee space, Circulation space in office was good. Switch board and thumb machine variable heights is 1100-1400mm.



Note: make changes as per audit report



Furniture in different place

Common Building Elements:

Colour contrast (in critical surfaces, sudden change in level, toilets, stairs, handrails, doors, switches and sockets, skirting, free standing obstacles and signage):

The building has minimum or no color contrast in different relevant surfaces, and there is a need to improve and upgrade on the same.

Recommendation: Common Building Elements

Clear colour contrast to be maintained in all critical surfaces, sudden change in level, toilets, stairs, handrails, between doors, door frames and walls, switches and sockets, skirting, free standing obstacles and signages.

Accessible Toilets

Observations:

There is one accessible toilet for disabled person in the building, but not as per the guideline. Toilets has sliding door, door width more than 1000 mm, wash basin height 840 mm, mirror height more than 900mm, low circulation space in toilet, grab bars not fitted in toilet. The floor surface of the toilets is slippery. Toilets in office were in good condition & maintained. Toilets also do not comply with accessibility parameters in terms of size, colour, fittings, accessories, requirements for alarm systems etc.

Note: make changes as per Audit report



Accessible toilet not as per guidelines

(End)

Association for Disabled People

[Signature]
Gen. Secretary